

高松中央商店街 店舗立地動向調査結果

(令和5年12月末調査)

商店街別内訳

Table with columns for survey periods (R5.6 to H24.6) and rows for district parts (全フロア, 1階部分). Each cell contains data for shop counts and vacancy rates, with red text indicating increases.

※今回調査と、これまでの調査との空き店舗数の比較については、赤色の数字が空き店舗数の増加を示す。

- 飲食店: 飲食店・喫茶店・スナック 等
その他: 病院・金融機関・ヘアサロン・遊技場・オフィス・案内所・学習塾 等
除 外: 工事中の区域・駐車場・駐輪場・空き地・住居・倉庫 等

高松中央商店街 店舗立地動向調査結果

空き店舗数の推移

全フロア

	H7.6.30	H20.6.30	H20.12.31	H21.6.30	H21.12.31	H22.6.30	H22.12.31	H23.6.30	H23.12.31	H24.6.30	H24.12.31	H25.6.30	H25.12.31	H26.6.30	H26.12.31	H27.6.30	H27.12.31	H28.6.30	H28.12.31	H29.6.30	H29.12.31	H30.6.30	H30.12.31	R1.6.30	R1.12.31	R2.6.30	R2.12.31	R3.6.30	R3.12.31	R4.6.30	R4.12.31	R5.6.30	R5.12.31
兵庫町	7	18	14	15	16	16	17	18	17	18	19	19	20	24	22	23	22	24	27	27	27	23	25	25	24	28	24	28	25	27	26	28	27
片原町西部	6	12	11	12	12	12	13	14	12	11	13	13	13	11	11	10	11	12	9	9	11	11	12	14	14	12	13	11	12	11	11	16	12
片原町東部	8	14	13	13	13	14	12	12	12	11	13	13	14	14	14	13	14	14	17	16	16	13	12	10	9	10	12	11	10	10	10	12	12
ライオン通	21	45	41	45	45	39	39	43	48	50	44	40	38	40	43	47	46	45	43	47	38	36	37	34	36	37	39	38	40	39	39	34	36
丸亀町	1	14	14	12	13	10	9	12	10	8	5	11	12	10	13	11	10	10	11	16	16	14	14	9	11	18	19	22	22	24	23	19	19
南新町	4	22	28	27	29	26	24	28	21	19	17	18	19	19	19	18	17	19	18	21	18	19	23	24	20	26	28	20	16	16	20	16	13
常磐町	7	38	31	31	34	27	29	31	29	28	27	27	29	29	32	25	26	23	24	22	26	23	24	22	22	20	20	21	19	16	18	24	20
田町	7	27	27	26	26	27	26	26	26	26	29	28	28	29	29	30	31	31	36	31	31	32	27	23	23	28	32	31	28	27	27	28	25
空き店舗数	61	190	179	181	188	171	169	184	175	171	167	169	173	176	183	177	177	178	185	189	183	171	174	161	159	179	187	182	172	170	174	177	164

1階部分

	H7.6.30	H20.6.30	H20.12.31	H21.6.30	H21.12.31	H22.6.30	H22.12.31	H23.6.30	H23.12.31	H24.6.30	H24.12.31	H25.6.30	H25.12.31	H26.6.30	H26.12.31	H27.6.30	H27.12.31	H28.6.30	H28.12.31	H29.6.30	H29.12.31	H30.6.30	H30.12.31	R1.6.30	R1.12.31	R2.6.30	R2.12.31	R3.6.30	R3.12.31	R4.6.30	R4.12.31	R5.6.30	R5.12.31
兵庫町	5	8	7	6	7	6	7	7	6	8	8	8	9	9	5	5	4	7	9	9	9	8	10	11	9	12	10	13	10	12	12	14	12
片原町西部	2	6	5	6	6	6	6	7	6	5	7	7	7	6	6	5	6	7	4	4	6	5	6	8	8	5	5	3	4	3	3	8	5
片原町東部	7	10	9	9	9	10	9	9	8	7	9	9	9	9	9	8	9	9	12	11	11	8	7	5	4	5	7	6	5	5	5	7	7
ライオン通	11	23	19	22	21	18	20	23	21	25	18	13	12	12	12	16	15	13	15	14	15	14	15	13	12	15	15	14	14	14	17	13	13
丸亀町	1	9	9	8	9	6	6	7	4	3	2	4	3	3	8	2	1	1	2	5	6	4	5	3	0	5	5	7	8	11	10	10	11
南新町	3	15	17	19	22	19	15	19	17	15	13	14	15	14	12	11	12	14	15	15	11	11	15	17	14	18	20	14	12	12	15	12	10
常磐町	5	28	25	26	27	19	18	20	18	17	17	17	19	19	22	17	16	13	14	14	17	13	14	13	11	10	9	9	7	5	6	10	7
田町	6	15	15	14	15	16	17	16	14	15	18	18	18	18	19	18	19	19	21	19	20	20	18	15	13	17	20	19	17	17	18	19	18
空き店舗数	40	114	106	110	116	100	98	108	94	95	92	90	92	90	93	82	82	83	92	91	95	83	90	85	71	87	91	85	77	79	86	93	83

空き店舗率推移

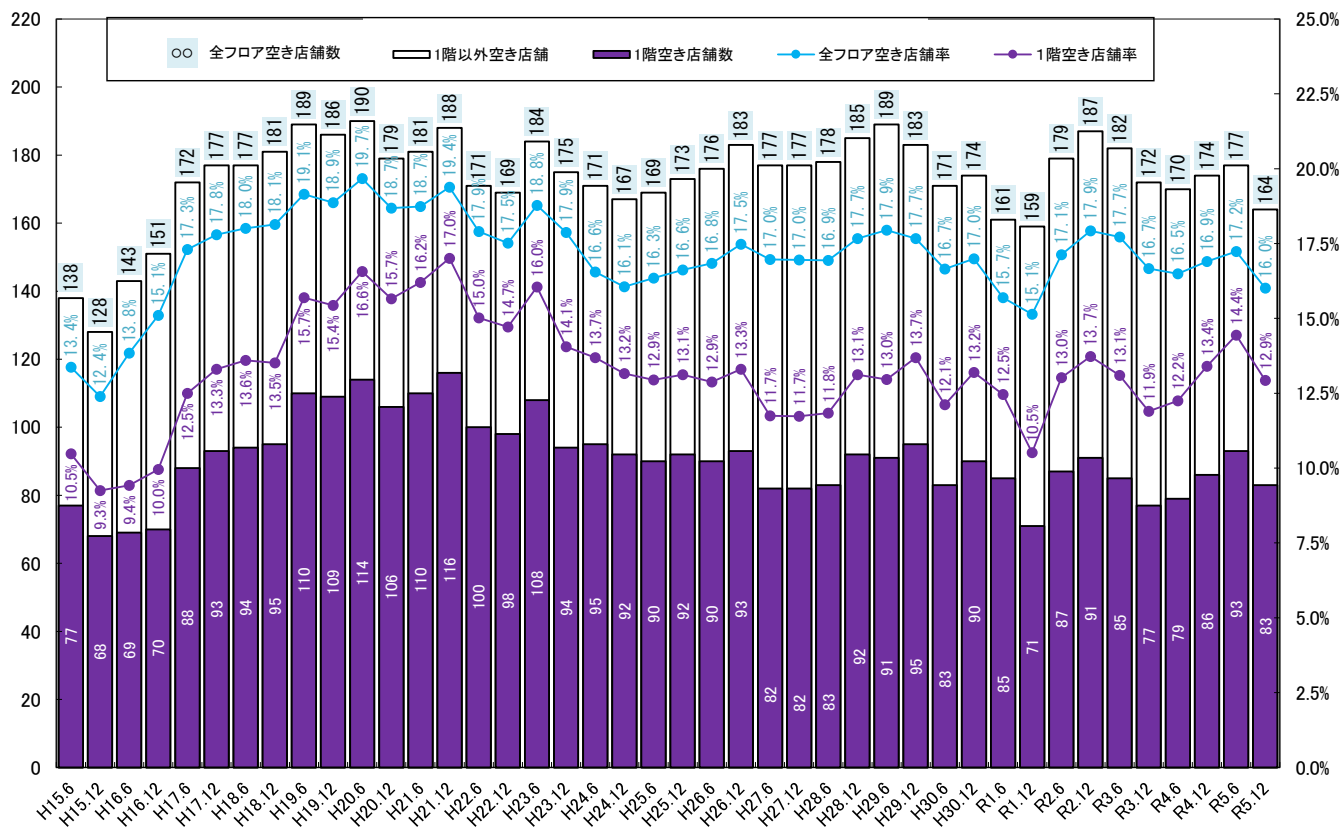
全フロア

	H7.6.30	H20.6.30	H20.12.31	H21.6.30	H21.12.31	H22.6.30	H22.12.31	H23.6.30	H23.12.31	H24.6.30	H24.12.31	H25.6.30	H25.12.31	H26.6.30	H26.12.31	H27.6.30	H27.12.31	H28.6.30	H28.12.31	H29.6.30	H29.12.31	H30.6.30	H30.12.31	R1.6.30	R1.12.31	R2.6.30	R2.12.31	R3.6.30	R3.12.31	R4.6.30	R4.12.31	R5.6.30	R5.12.31
兵庫町	5.5%	14.4%	10.9%	11.5%	12.3%	12.2%	12.9%	13.5%	12.9%	13.4%	14.2%	14.2%	14.9%	17.8%	16.2%	17.2%	16.4%	17.6%	19.9%	19.9%	19.6%	16.9%	18.4%	18.5%	17.6%	20.4%	17.6%	20.9%	18.4%	20.0%	19.5%	21.1%	20.3%
片原町西部	7.2%	16.2%	14.9%	16.0%	16.0%	16.0%	17.1%	18.4%	15.8%	14.5%	17.1%	17.6%	17.6%	14.9%	14.9%	13.7%	15.1%	16.4%	12.3%	12.3%	14.9%	14.9%	16.0%	18.7%	18.9%	17.4%	18.8%	15.7%	17.1%	15.7%	15.7%	22.9%	17.9%
片原町東部	11.8%	23.3%	21.7%	21.7%	21.7%	23.3%	20.7%	20.7%	20.3%	19.0%	21.7%	21.7%	23.7%	23.7%	23.7%	22.0%	23.7%	23.7%	28.8%	27.6%	28.1%	23.6%	22.2%	18.5%	17.0%	18.5%	22.6%	21.2%	19.2%	18.9%	18.5%	22.2%	22.2%
ライオン通	9.1%	20.6%	18.8%	20.5%	20.5%	17.8%	17.8%	19.7%	21.5%	22.7%	19.9%	18.4%	17.3%	18.2%	19.6%	21.3%	20.7%	20.3%	19.7%	21.0%	17.7%	16.5%	17.1%	15.7%	16.1%	16.7%	17.7%	17.3%	17.9%	17.5%	17.5%	15.3%	16.1%
丸亀町	0.6%	9.4%	10.0%	8.6%	8.7%	7.5%	6.7%	8.2%	6.7%	3.9%	2.4%	5.2%	5.6%	4.6%	5.9%	5.1%	4.7%	4.6%	5.1%	7.3%	7.3%	6.4%	6.5%	4.2%	5.0%	8.3%	8.6%	10.0%	9.7%	10.4%	10.0%	8.3%	8.3%
南新町	3.4%	19.1%	23.9%	23.5%	25.2%	22.6%	20.2%	23.5%	18.6%	16.5%	14.8%	15.7%	16.5%	16.4%	16.4%	15.4%	14.5%	16.1%	15.4%	17.8%	15.8%	16.8%	20.0%	20.9%	17.5%	22.6%	24.3%	19.4%	16.3%	16.3%	20.4%	16.2%	13.3%
常磐町	5.7%	36.5%	31.3%	30.1%	33.0%	26.0%	27.4%	29.0%	27.4%	26.7%	26.0%	26.0%	28.2%	28.4%	31.4%	24.5%	25.5%	22.1%	23.1%	21.2%	26.3%	23.5%	25.0%	22.4%	22.7%	20.8%	21.1%	22.3%	20.2%	18.0%	20.2%	27.0%	22.5%
田町	5.6%	22.3%	22.1%	21.3%	22.0%	22.9%	21.5%	21.3%	21.5%	21.3%	23.8%	23.3%	23.0%	23.8%	23.8%	24.4%	25.2%	25.2%	29.3%	25.4%	26.1%	27.8%	23.1%	19.5%	17.2%	20.9%	24.1%	23.3%	21.2%	20.5%	20.6%	21.4%	19.1%
全体	6.0%	19.7%	18.7%	18.7%	19.4%	17.9%	17.5%	18.8%	17.9%	16.6%	16.1%	16.3%	16.6%	16.8%	17.5%	17.0%	17.0%	16.9%	17.7%	17.9%	17.7%	16.7%	17.0%	15.7%	15.1%	17.1%	17.9%	17.7%	16.7%	16.5%	16.9%	17.2%	16.0%

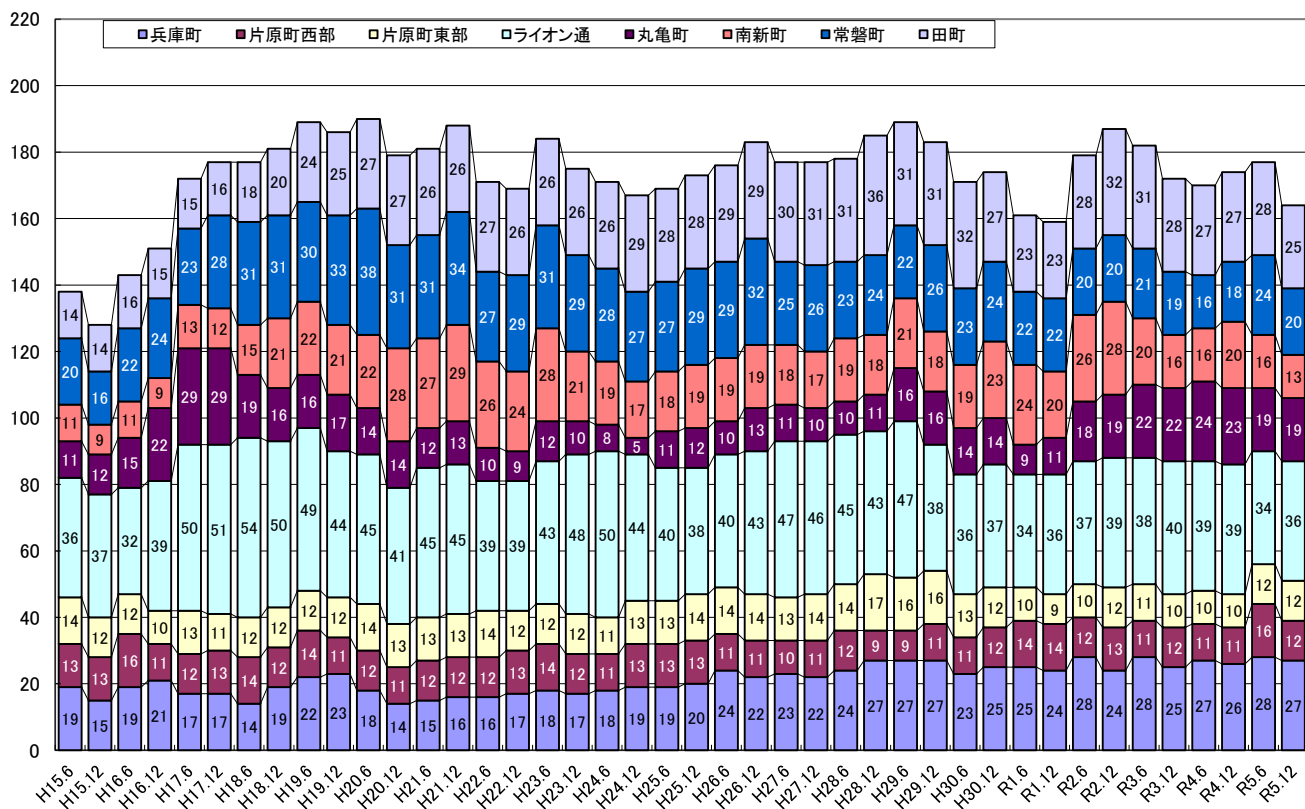
1階部分

	H7.6.30	H20.6.30	H20.12.31	H21.6.30	H21.12.31	H22.6.30	H22.12.31	H23.6.30	H23.12.31	H24.6.30	H24.12.31	H25.6.30	H25.12.31	H26.6.30	H26.12.31	H27.6.30	H27.12.31	H28.6.30	H28.12.31	H29.6.30	H29.12.31	H30.6.30	H30.12.31	R1.6.30	R1.12.31	R2.6.30	R2.12.31	R3.6.30	R3.12.31	R4.6.30	R4.12.31	R5.6.30	R5.12.31
兵庫町	5.6%	9.5%	8.3%	7.1%	8.3%	7.1%	8.3%	8.3%	7.2%	9.5%	9.5%	9.5%	10.7%	10.7%	6.0%	6.0%	4.8%	8.3%	10.7%	10.6%	10.5%	9.3%	11.8%	13.3%	11.1%	14.6%	12.3%	16.5%	12.7%	15.2%	15.4%	17.9%	15.4%
片原町西部	2.9%	10.0%	8.5%	10.0%	10.0%	10.0%	10.2%	11.7%	10.0%	8.3%	11.7%	11.9%	11.9%	10.2%	10.2%	8.6%	10.3%	12.1%	6.9%	6.9%	10.3%	8.6%	10.2%	13.6%	13.8%	9.6%	9.6%	5.7%	7.5%	5.7%	5.7%	15.1%	10.0%
片原町東部	11.3%	19.2%	17.3%	17.3%	17.3%	19.2%	17.6%	17.6%	15.7%	14.0%	17.3%	17.3%	17.3%	17.3%	17.3%	15.4%	17.3%	17.3%	23.1%	21.6%	22.0%	16.7%	14.9%	10.6%	8.7%	10.6%	15.2%	13.3%	11.1%	11.1%	10.9%	15.2%	15.2%
ライオン通	7.3%	16.9%	14.0%	16.1%	15.3%	13.1%	14.4%	16.8%	15.2%	18.2%	13.1%	9.6%	8.7%	8.7%	8.8%	11.7%	10.9%	9.4%	10.9%	10.1%	11.0%	10.2%	11.0%	9.6%	8.7%	10.9%	11.1%	10.4%	10.3%	10.2%	12.4%	9.6%	9.5%
丸亀町	0.9%	8.0%	8.7%	7.7%	8.3%	6.6%	6.7%	7.2%	4.1%	2.5%	1.6%	3.2%	2.4%	2.4%	6.3%	1.6%	0.8%	0.8%	1.6%	4.0%	4.8%	3.3%	4.1%	2.5%	0.0%	4.2%	4.2%	5.9%	6.6%	9.0%	8.2%	8.2%	9.0%
南新町	3.4%	17.9%	20.2%	22.9%	26.5%	22.9%	17.9%	22.6%	20.5%	17.9%	15.5%	16.7%	17.9%	16.7%	14.3%	13.1%	14.3%	16.5%	17.6%	17.6%	13.4%	13.4%	18.1%	20.5%	17.1%	21.7%	24.1%	18.9%	17.1%	16.9%	21.1%	16.7%	13.9%
常磐町	6.8%	40.6%	37.3%	37.7%	39.1%	27.1%	26.1%	29.0%	26.5%	25.4%	25.0%	25.0%	27.9%	27.9%	32.4%	25.0%	23.5%	19.1%	20.6%	20.3%	25.4%	19.4%	21.5%	19.4%	17.2%	16.1%	15.0%	15.3%	12.1%	9.3%	11.1%	18.5%	13.0%
田町	6.3%	16.7%	16.5%	15.6%	16.9%	18.0%	18.7%	17.6%	15.9%	16.7%	20.0%	20.5%	20.0%	20.0%	21.1%	19.8%	20.9%	20.9%	23.1%	20.9%	22.5%	23.5%	20.9%	17.2%	14.9%	19.5%	23.3%	22.1%	20.0%	20.2%	21.7%	22.9%	21.7%
全体	5.4%	16.6%	15.7%	16.2%	17.0%	15.0%	14.7%	16.0%	14.1%	13.7%	13.2%	12.9%	13.1%	12.9%	13.3%	11.7%	11.7%	11.8%	13.1%	13.0%	13.7%	12.1%	13.2%	12.5%	10.5%	13.0%	13.7%	13.1%	11.9%	12.2%	13.4%	14.4%	12.9%

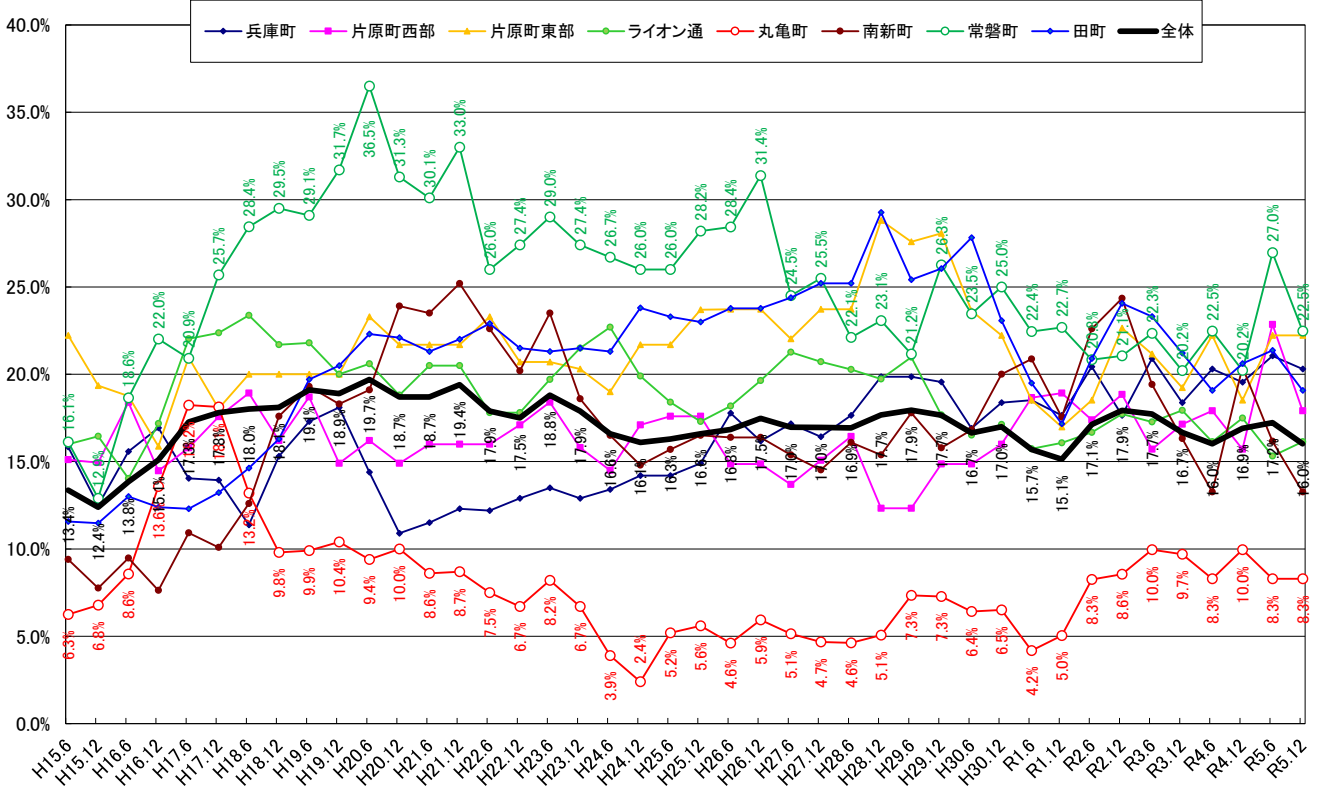
空き店舗立地動向の推移(全フロア・1階部分)



空き店舗立地動向の推移(商店街全フロア)



空き店舗率推移(商店街別全フロア)



空き店舗率推移(商店街別1階部分のみ)

